



Rail Manufacturing CRC

Rail Innovation Gateway

Guidelines

November 2017

Rail Manufacturing CRC
Unit 16, 70 Racecourse Road,
North Melbourne Victoria 3051
PO Box 273
Flemington Victoria 3031
Ph: (03) 8589 7112
www.rmcr.com.au

The Rail Manufacturing CRC's Rail Innovation Gateway is open to applications from businesses either working in the rail industry or with the potential to do so, who are asked to submit research and development project proposals focused on increasing competitiveness, capacity and productivity in Australian rail manufacturing.

The Centre will fund up to \$1,000,000 per project, which is to be matched dollar-for-dollar (1:1) by the Industry Organisation/s involved. The funds will be paid to a leading Australian Research Institution, who will be matched to the organisation/s to undertake the research project in partnership.

All Rail Innovation Gateway project proposals must address one of the Rail Manufacturing CRC's rail research priority areas (see [Section 3](#)).

Proposals can be submitted by existing [Rail Manufacturing CRC Industry and Research Participants](#) or from Industry Organisations and Research Institutions with an interest in becoming a Participant in the Rail Manufacturing CRC.

1.0 Application assessment process

The Rail Manufacturing CRC will conduct a two-stage process for identifying suitable projects.

Stage 1 will identify a shortlist of Rail Innovation Gateway project proposals that best meet the Selection Criteria (see [Section 5](#)). The project proposals that make this shortlist will be selected to proceed to Stage 2.

Stage 2 will involve project proposals undergoing a more detailed assessment and evaluation process.

Applicants whose project proposals are selected to proceed following Stage 2 will then be required to sign an Other Participants Agreement (if not already a Participant) and enter into negotiations with the Rail Manufacturing CRC to develop a Project Agreement.

Once a Project Agreement has been negotiated to the satisfaction of all parties, the projects will be put forward to the Rail Manufacturing CRC Research & Development subcommittee and the full Board for final approval.

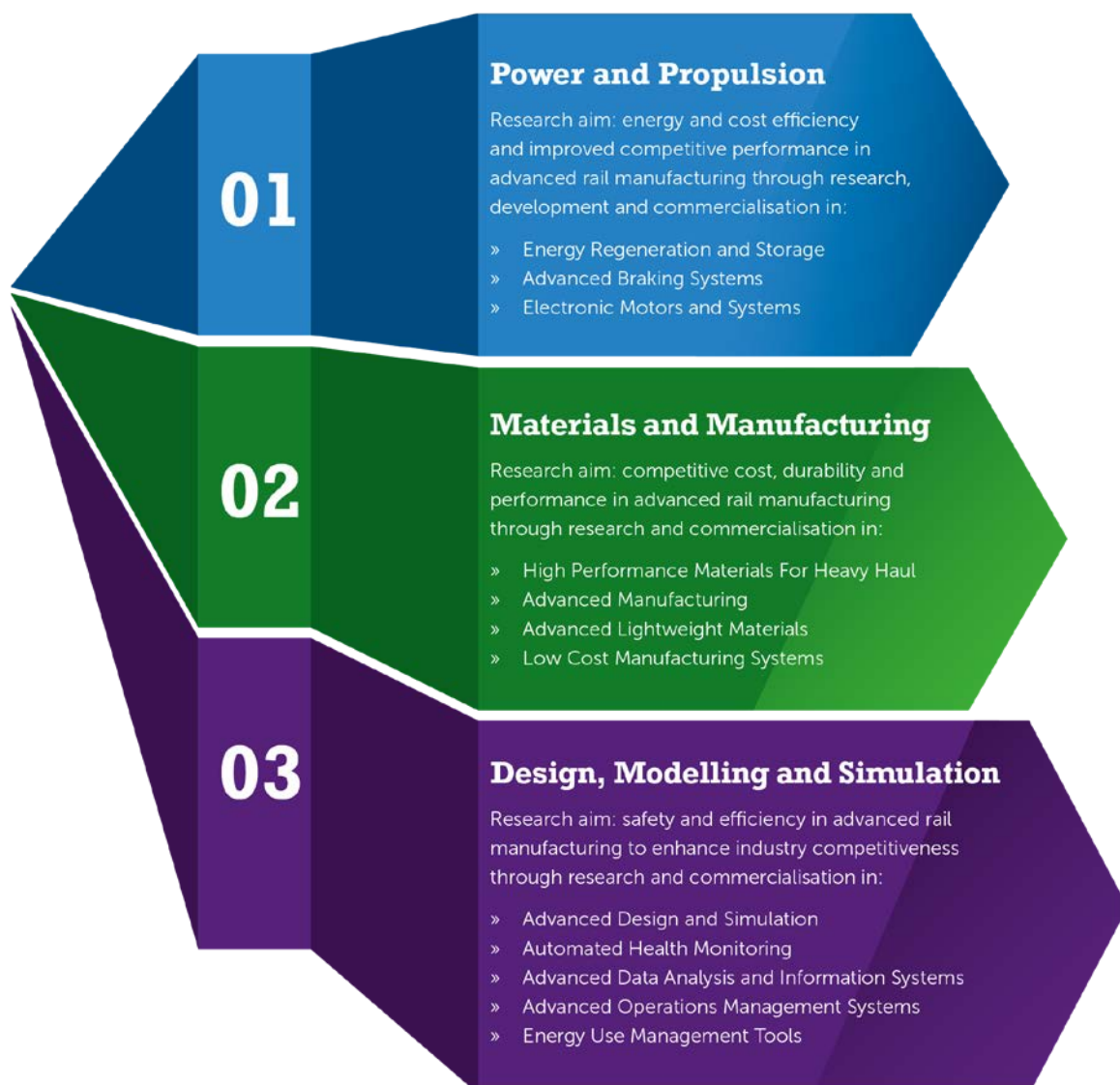
Upon and subject to final approval being provided, a Project Agreement for each project will proceed to formal execution by all parties.

2.0 How to apply

- All Rail Innovation Gateway project proposals must be submitted on the official application form – available on the Rail Manufacturing CRC website at <http://rmcrc.com.au/register-your-project/>
- Project proposals must be submitted by email to admin@rmcrc.com.au by the due date of Friday 9 March, 2018 – please note, earlier applications are very welcome
- All information requested must be provided

3.0 Rail Manufacturing CRC – Research areas of priority

The Rail Manufacturing CRC is seeking Rail Innovation Gateway project proposals that address one of the Centre’s rail technology priority areas – as below. The project proposals must also consider broader rail manufacturing industry needs, with a direct application and benefit to the industry.



4.0 Funding Model

The Rail Manufacturing CRC will fund up to \$1,000,000 per project, which is to be matched dollar-for-dollar (1:1) by the Industry Organisation/s involved.

The approved projects will be conducted in collaboration with one of the Rail Manufacturing CRC's [Research Institutions](#). The funding will be paid to the Research Institution to conduct the project in accordance with the budget in the respective project agreement. Cash **cannot be provided** to the industry participant.

The researchers involved will also contribute significant contributions, such as labour, access to equipment and facilities, etc, to assist in the economic and efficient completion of the project. The cash budget for the Rail Manufacturing CRC's Rail Innovation Gateway Projects is only to be used:

- to pay research provider staff, and
- for limited operational expenditure (OpEx) and limited capital expenditure (CapEx) by the research provider organisation.

The granting of funding is subject to the Industry Organisation/s and Research Institution becoming Participants within the Rail Manufacturing CRC and entering into a Project Agreement with the Rail Manufacturing CRC.

If Industry Organisations are aware of the Research Institution they wish to partner with, they are requested to consult with the university to develop a budget for the project proposal. Alternatively, if the organisation/s need to seek introductions to Research Institutions, they are asked to get in contact with the Rail Manufacturing CRC to discuss their proposal – (03) 8589 7112.

The Rail Manufacturing CRC has no obligation to fund any Rail Innovation Gateway project proposals unless, and until, it has entered into a Project Agreement in respect of the project. The entry into such a Project Agreement is entirely at the sole discretion of the Rail Manufacturing CRC Board.

5.0 Rail Innovation Gateway – Selection Criteria

All project proposals will be assessed against the following Selection Criteria:

1 - Research Priority

- How well does the project proposal address a research priority?
- How well does the project proposal address a specific rail technology issue?
- How well does the project proposal address a rail manufacturing industry need?

2 - Quality of Research

- Are the project objectives, project plan and methodology adequate to address the research priority and the rail technology issue?
- Is the proposed research novel and innovative?
- Can the project be completed in the stated timeframe?

3 - Project Team

- What is the research project team leader's suitability and track record?
- What is the project team's expertise and capacity to undertake and manage the project? (eg. staff, access to facilities and infrastructure, etc.)

4 - Applicability of Research

- Have appropriate end-users/industries been identified and consulted about the project?
- Have the benefits of the project, commercial and otherwise, been assessed and described?
- How likely is the project to deliver a successful outcome?
- Do the project participants have adequate skills, infrastructure and access to facilities to undertake the project?